

ENOVATES

PRO520

43kW AC

Truck charger



AC charging in the logistic sector

Home depot charging:

Charging an electric truck at Home Depot before a delivery maximizes range, reduces mid-route stops, supports efficient scheduling, and can leverage off-peak electricity and green energy sources.

Distribution depot charging:

Slow AC charging at distribution depots efficiently manages energy needs for both long-haul and short-distance trucks, reducing grid overload, lowering costs through off-peak rates, and simplifying scheduling to improve operational efficiency.

Long mandatory rest break

Slow AC charging during long mandatory rest breaks reduces battery strain, extends vehicle lifespan, ensures reliable performance, and saves energy costs, while allowing drivers to rest without interruptions.

Last mile deliveries

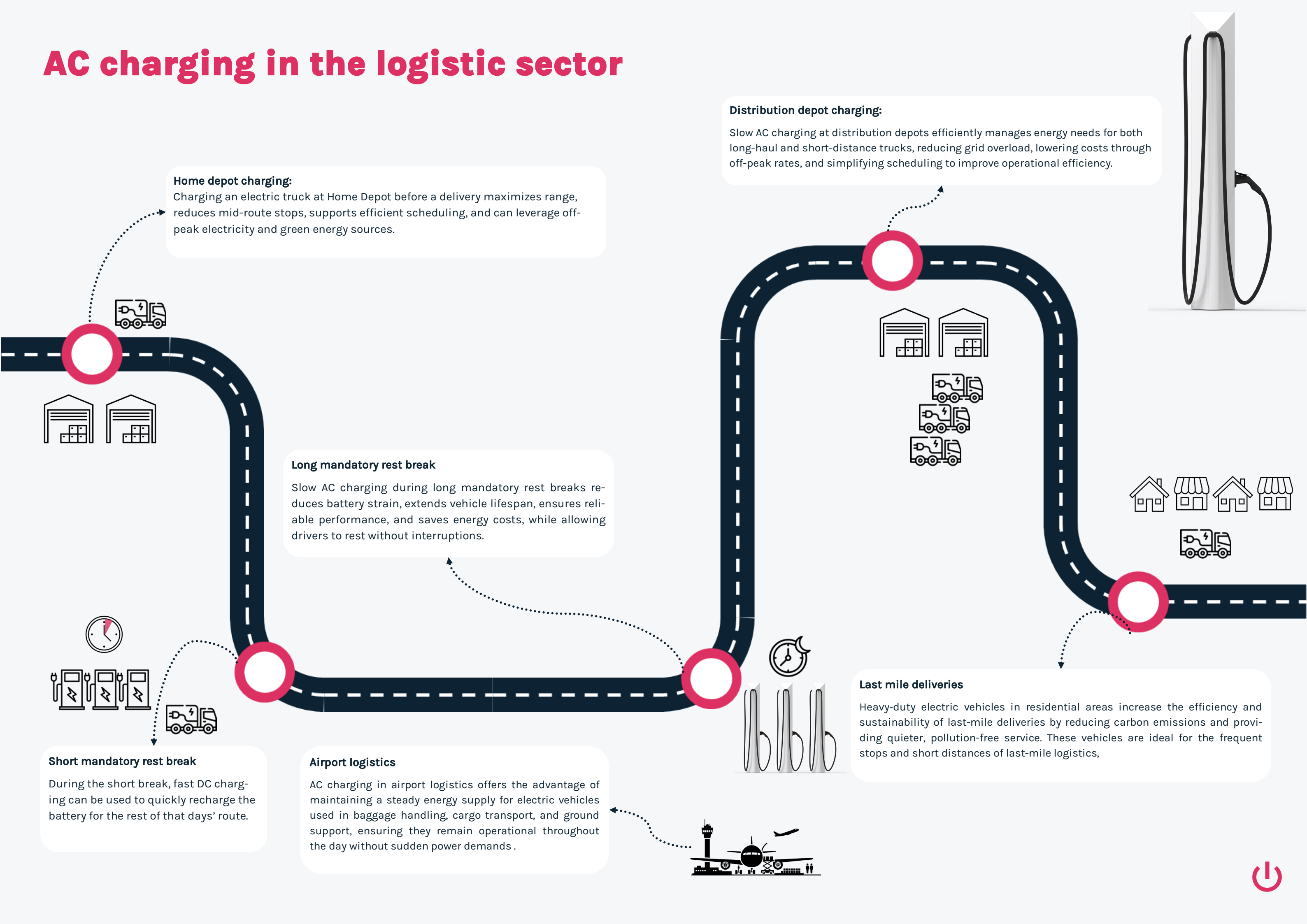
Heavy-duty electric vehicles in residential areas increase the efficiency and sustainability of last-mile deliveries by reducing carbon emissions and providing quieter, pollution-free service. These vehicles are ideal for the frequent stops and short distances of last-mile logistics,

Short mandatory rest break

During the short break, fast DC charging can be used to quickly recharge the battery for the rest of that days' route.

Airport logistics

AC charging in airport logistics offers the advantage of maintaining a steady energy supply for electric vehicles used in baggage handling, cargo transport, and ground support, ensuring they remain operational throughout the day without sudden power demands.



Build to adapt

Highly Visible Design

With a height over two meters, the PRO520 is easily visible from the truck's cabin, ensuring that drivers can quickly locate and access the charging station even in busy or dimly lit environments.

Powerful 43 kW AC Charging

Capable of 43 kW AC charging, the PRO520 can efficiently charge up to 500 kWh overnight. This high power output supports fast and reliable charging, making it ideal for keeping your fleet ready and operational while considering your budget.

7.5 Meter Cable Length

The PRO520-7.5m features a 7.5-meter cable length, providing the flexibility needed to accommodate various installation scenarios and support multiple truck brands. This extended cable reach ensures that the charging station can be easily adapted to different vehicle types and configurations.

Advanced Cable Management System

The integrated cable management system is designed to securely and hassle free store the charging cable. This system not only protects the cable, extending its lifespan but also enhances safety by preventing tripping hazards and cable damage, thereby ensuring a smooth and secure charging experience for the truck driver.



Customizable Branding

The PRO520-7.5m offers full customization to align with your brand identity. Whether you need specific colours, logos, or design elements, this flexibility ensures that the charging station not only meets functional needs but also complements your company's visual branding and presence.

Smart Energy Management

Incorporating advanced smart energy management features, this charging station supports load balancing and can be integrated into a charging cluster with other Enovates products. This intelligent system optimizes energy use across multiple stations, ensuring efficient operation and contributing to a more sustainable energy management approach for your fleet.

Future-Proof Technology

The PRO520-7.5m is designed with future advancements in mind, incorporating ISO15118 compatibility for Plug & Charge (P&C), a display and payment options. This ensures that the charging station is equipped to handle emerging standards and technologies, offering seamless integration and adaptability as industry requirements evolve.



Technical specifications

| General | |
|---|--|
| Input (mains) | 400VAC - 50Hz |
| Connection method | Permanently connected |
| Output (to EV) | Voltage range 400VAC Current range 0-63A |
| Mains type | 3-phase (3P+N with PE) |
| Socket EU: | Type 2 with 7,5 meter fixed cable |
| Cable management system | Pully system with 10kg (spring) load, 4 meter cable retraction |
| Energy meter | MID certified kWh meter |
| Mounting type | Stationary equipment / Ground mounted |
| Access | Equipment for locations with non-restricted access |
| Dimensions | |
| Width | 290mm |
| Height | 2250mm* |
| Depth | 455mm* |
| Weight | 70kg* |
| Ambient | |
| Ambient temperature (in operation) | -25 C to +50 C |
| Ambient temperature (storage/transport) | -25 C to +70 C |
| Max. allowed density (in operation) | 90 % (non-condensing) |
| Humidity | 10% to 95% |
| Dirt and water resistance | IP54 |
| Impact resistance | IK10 |
| Environmental conditions | Outdoor use |
| Technology | |
| Platform | Linux based java platform, Hardware and software based on proven design, Logging, Advanced remote monitoring, Firmware local and remotely upgradable |
| Communication | |
| Communication protocol | OCPP JSON 1.6 / 2.01 |
| Connection Ethernet | 1 x RJ45, static IP or DHCP |
| Modem | 4G with fallback to 2G (SIM card provided by CPO) |
| RFID | Multiprotocol |
| HMI | Status induction by led interface // optional display (AFIR) ¹ |
| ISO15118 | Via additional hardware (optional) ² |
| Protections | |
| Circuit breakers | 80A C curve |
| Residual current circuit breaker | Type A 30mA |
| Temperature sensor | Integrated on control board |
| Tilted sensor | Integrated on control board |
| Overvoltage protection | Class II-III |
| Leakage current protection | 6mA DC leakage current detection |
| Contact Welding protection | Shunt activation via auxiliary detection contact on relay |
| Protection class against electrical shock | Class I equipment |
| Surge arrestor | T2-T3 |
| Certification | |
| IEC61851-1 (ed.3) ; IEC61851-21-2 | |
| RED 2014/53/EU ; ROHS 2011/65/EU ; NF EN17186 | |

Smart fleet charging

The PRO520-7.5m is a 43kW AC charging station designed specifically for heavy-duty electric vehicles, offering a combination of efficiency and cost savings. It provides a more **economical alternative to high-power DC chargers** while ensuring reliable performance for fleet operations. This model incorporates Enovates' **advanced charging algorithm**, which features load balancing and dynamic charging to **optimize energy use** and extend the life of your equipment.

The PRO520-7.5m is built with safety and durability in mind. It includes a **built-in surge arrestor** to protect the equipment from surge peaks and a shunt device to prevent contact welding, safeguarding both the station and your investment. The **cable management system** is designed for easy storage and maintenance, reducing hassle and improving the longevity of the cable assembly.

The charging station is available in two versions: the advanced model, which includes a **4G modem** for standalone use or as a **master station** within a charging network, and the satellite version, which functions within a **cluster** of PRO520 stations or other Enovates products like the **Single Wallbox and PRO400**.

With its modern, customizable design, the PRO520-7.5m is crafted to be an eye-catching addition to your facility, allowing for **branding opportunities**. It is **certified to meet the highest industry standards** and is future-proofed with options for upgrading to

ISO15118 and an AFIR-compliant display by 2025, ensuring compliance with both current and future regulations.

For more details on how the PRO520-7.5m can be integrated into your charging infrastructure, please contact your sales representative.



| Order information | |
|-------------------|--|
| Order code | Description |
| 100000414 | 603FEA01032 - PRO520 - 7,5 meter - 4G - Advanced |
| 100000415 | 603FEB00032 - PRO520 - 7,5 meter - Satellite |



ENOVATES

DRIVEN BY **SMART E-MOBILITY**



Discover our full product range at www.enovates.com